

The logo for AusDiagnostics features the word "AusDiagnostics" in a white sans-serif font. Above the letters "i", "a", "g", "n", and "o" are five small circles of varying sizes and colors, including shades of gold and white, arranged in a slightly curved line.

AusDiagnostics

**Ultrplex Alliance™**

MT-Prep™ XL

Ultrplex 3

Aligning reliable automation for  
your next high-throughput workflow

# ULTRAPLEX ALLIANCE™

## Aligning reliable automation for your next high-throughput workflow

The Ultraplex Alliance™ combines the MT-Prep™ XL for sample purification and the Ultraplex 3 for automated MT-PCR processing.



Total processing time<sup>1</sup> Extraction: 1hr 45 mins / MT-PCR: 3 hrs

Total hands-on time 20 mins<sup>2</sup>

Samples / run up to 96 samples

Throughput / 24hrs up to 960 samples<sup>3</sup>

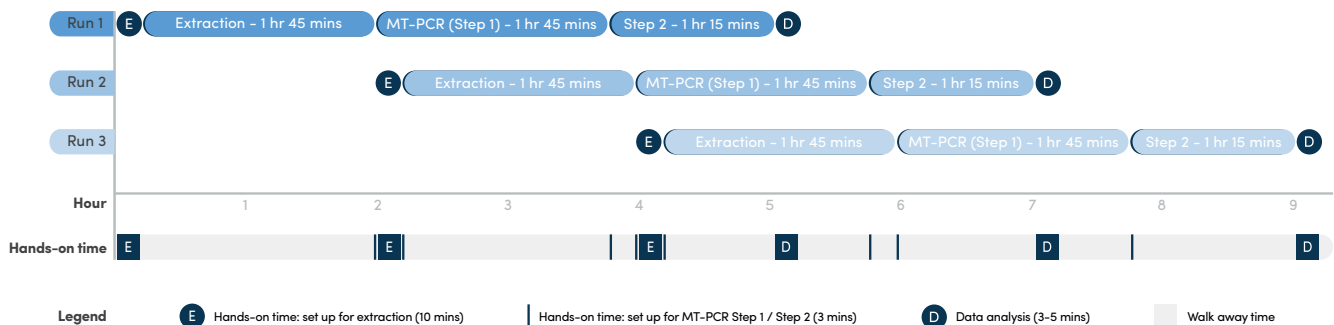
<sup>1</sup>Timings are based on use of MT-Prep™ 96 Viral/Pathogen Extraction Kit on the MT-Prep™ XL and 8-well MT-PCR universal panel on the Ultraplex 3.

<sup>2</sup> Includes setup times for the MT-Prep™ XL and Ultraplex 3.

<sup>3</sup> Starting with unpurified samples, one Ultraplex Alliance™ setup can provide results for up to 960 samples within a 24hr period.

## Ultraplex Alliance™ Workflow

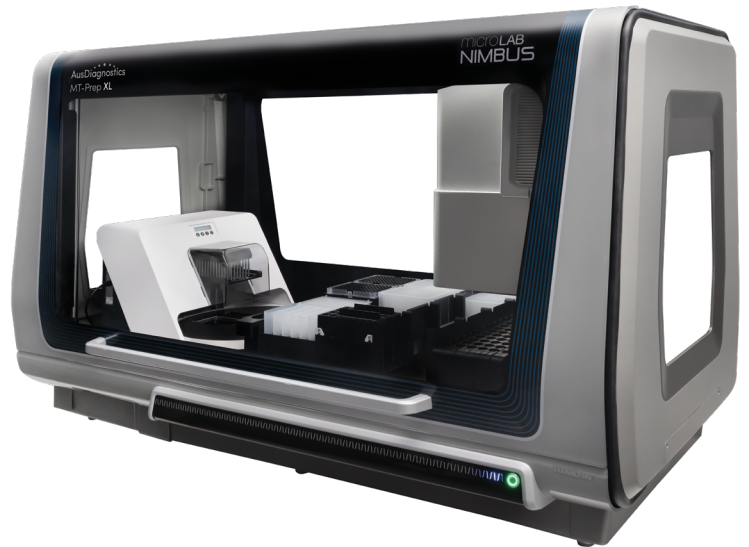
4 hrs 45 mins total processing time



# MT-PREP™ XL

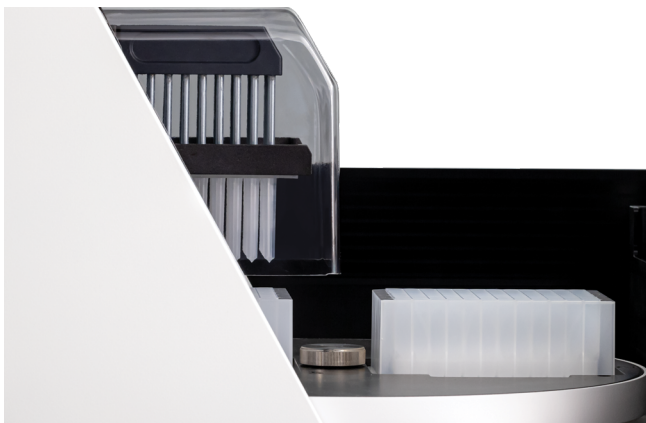
- Minimise error with end-to-end automation including sample aliquoting
- Achieve sample purification for up to 96 samples per run in 1 hr 45 mins\*
- Automatic scanning of all sample tubes ensures intersystem traceability
- Extract DNA and RNA in the same run\*
- All required reagents packaged in one box\*

*\* Based on sample purification of 96 samples using MT-Prep™ 96 Viral/Pathogen Extraction Kit.*



## Efficient parallel processing

A dual-position turntable allows simultaneous processing of one plate with the magnetic head while another plate is prepared and transported in readiness for subsequent processing. This parallel processing capability results in optimal throughput.



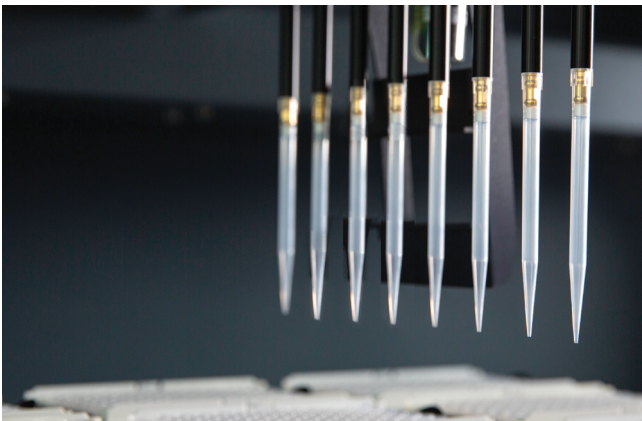
## Aligned technology for unmatched capability

Combining advanced liquid handling robotics and proven magnetic particle-based technology, the MT-Prep™ XL System delivers reliable high-throughput, high-purity nucleic acid extraction.



# ULTRAPLEX 3

- Automated MT-PCR setup and real-time PCR analysis
- Process up to 96 samples in 3 hrs  
—from sample extracts to real-time PCR results
- 8-channel pipetting for maximum efficiency
- 384-well real-time thermocycler for high-throughput
- Less than 10 minutes hands-on time
- Use with universal MT-PCR panels



## Reliable accuracy

On-board 8-channel pipetting technology combines efficiency with accuracy and precision that eliminates the need for maintenance system liquids and associated maintenance operations. Inline filters provide channel protection from contamination.

## Diagnostic areas

Detect up to 30 targets simultaneously with the universal MT-PCR panels available in a range of diagnostic areas.

- SARS-CoV-2
- Respiratory pathogens
- Dermatophytes and other fungi
- Meningitis and encephalitis
- Urinogenital infections and STI
- Bacterial resistance

## Get started quicker with less hands-on time

Setup is quick and simple — as little as 3 minutes. Results for up to 96 samples can be attained in 3 hours, with less than 10 minutes hands-on time.



# SPECIFICATIONS

The Ultrplex Alliance™ consists of the MT-Prep™ XL for sample purification and the Ultrplex 3 for automated MT-PCR processing.

## MT-Prep™ XL - Sample Purification

Dimensions	W 135.9 x D 70.9 x H 88.9 cm (H 130 cm with door open)
Weight	136 kg
Processing capacity	1 - 96 samples per run
Throughput / 24hrs	Up to 960 samples
Processing time	1 hr 45 mins (including sample aliquoting) <sup>1</sup>
Sample volume	200 µL
Elution volume	50 - 200 µL
Protocols	Preinstalled
Power supply	110 - 240 VAC, 50/60 Hz, 5 A

## Ultrplex 3 - MT-PCR

Inclusions	1 x Processor 2 or 3 x Analysers	Depending on MT-PCR panel and throughput requirements <sup>2</sup>
Dimensions	Processor	W 145 x D 78 x H 108 cm (H 155 cm including tip disposal)
	Analyser <sup>2</sup>	W 21 x D 54 x H 54 cm per analyser
Weight	Processor	144.5 kg
	Analyser <sup>2</sup>	27 kg per analyser
Processing capacity	1 - 96 samples per run	
Throughput / 24 hrs	Up to 960 samples <sup>3</sup>	
Processing time	3 hrs <sup>4</sup>	
Hands-on time	10 mins	
Sample volume	10 µL	
Protocols	Preinstalled	
Power supply	110 - 240 VAC, 50/60 Hz	

<sup>1</sup> Based on MT-Prep™ 96 Viral/Pathogen Extraction Kit.

<sup>2</sup> 2 x Analysers: 96 samples for 8-well panels, 64 samples for 12-well panels, 32 samples for 24-well panels.

3 x Analysers: 96 samples for 8-well panels, 96 samples for 12-well panels, 24 samples for 24-well panels.

<sup>3</sup> Based on 8-well MT-PCR panel.

<sup>4</sup> Includes 3 minute bleaching protocol, excludes sample purification.

# ORDERING INFORMATION

## MT-Prep™ XL

Instruments & Components	
93600	MT-Prep™ XL
93615	MT-Prep™ XL Reagent Trough, 60 mL
93614	MT-Prep™ XL Small Tube Carrier 12-13 mm
93613	MT-Prep™ XL Large Tube Carrier 15-17 mm
93609	MT-Prep™ XL 1000 µL Black Conductive, Filter, Non-Sterile tips
93606	MT-Prep™ XL 96 Tip Comb for DW magnets, 100 pcs
93605	MT-Prep™ XL Deep Well 96 Plate, 50 pcs
Reagents & Consumables	
93650	MT-Prep™ 96 Viral/Pathogen Extraction Kit
91401	Extraction Control (100 µL)

Discover out how **Ultraplex Alliance™** delivers high-throughput diagnostic capabilities.

Contact us now to schedule a demonstration.

©2021, AusDiagnostics Pty Ltd. Ultraplex Alliance and MT-Prep are trademarks of AusDiagnostics Pty Ltd. The Ultraplex Alliance™ and its component systems are intended for research use only. Ultraplex Alliance™ systems, MT-Prep™ extraction kits, and MT-PCR panels are intended for use by trained professionals. BHTPMN\_ 01A; 2021 MAR 15.

## Ultraplex 3

Instrument & Consumables	
94601	Ultraplex 3
Enquire	50 µL conductive tips for Ultraplex 3, (24 x 96 tips)
Enquire	200 µL conductive tips for Ultraplex 3, (24 x 96 tips)
94503	Tip disposal bags (100) for Ultraplex 3
Universal Panels	
80081	SARS-CoV-2, Influenza and RSV 8-well
80617	Respiratory Pathogens 24-well
80618	Respiratory Pathogens 12-well
84115	Dermatophytes and other Fungi 12-well
87024	CSF 24-well ( <i>coming soon</i> )
87095	Viral and Syphilis 12-well
87123	Urogenital and Resistance 12-well
87124	Vaginitis and Vaginosis 12-well



AusDiagnostics Pty Ltd  
290-292 Coward St  
Mascot NSW 2020  
Australia  
T: +612 9698 8030

AusDiagnostics NZ Ltd  
B/11 Paul Matthews Rd  
Rosedale Auckland 0632  
New Zealand  
T: +64 (9) 886 9717

AusDiagnostics UK Ltd  
Unit 3, Anglo Business Park  
Asheridge Rd  
Chesham, Bucks, HP5 2QA  
United Kingdom  
T: +44(0)1494 300121

AusDiagnostics USA Inc  
Building 2  
1367 Brumlow Ave  
Southlake TX 76092  
USA  
T: +1 940 279 2171